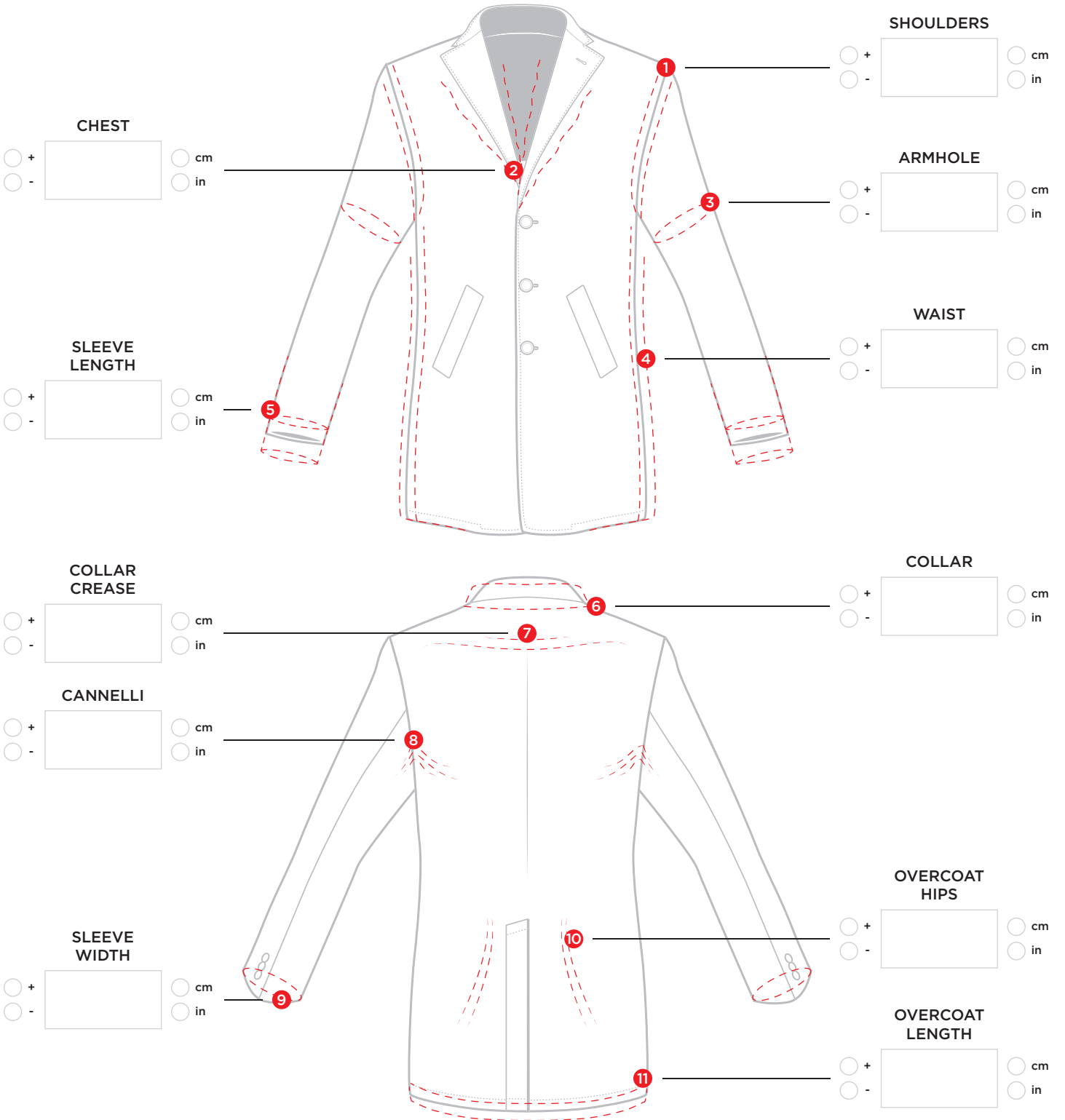


## OVERCOAT

Tailor name _____	Order code ____ / ____ - ____ - ____
Client name _____	Date ____ / ____ / ____

Before filling in the form, go to page 2 and check the alterations you can have done.



Possible alterations list and visible flaws highlighted.

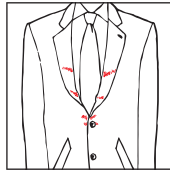
**1 SHOULDERS:**



You can take up to **2 cm (3/4 in)** out of each side to narrow the shoulders.



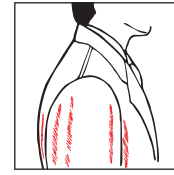
**2 CHEST:**



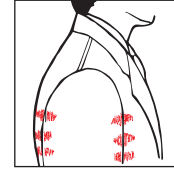
You can take up to **3 cm (1 1/8 in)** out of the chest area - **1.5 cm (5/8 in)** out of each side -, to reduce it.

You can add **1.5 cm (5/8 in)** to the back centre seam to increase the chest area.

**3 ARMHOLE:**

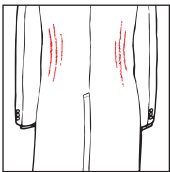


You can take up to **2 cm (3/4 in)** out of the armhole to reduce it.

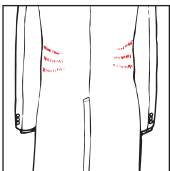


You can add **2 cm (3/4 in)** to the armhole to increase it.

**4 WAIST:**

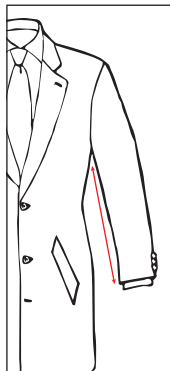


You can take up to **5 cm (2 in)** out of the overcoat waist - **3 cm (1 1/8 in)** out of the hips and **2 cm (3/4 in)** out of the back centre seam -, to reduce it.



You can add up to **5 cm (2 in)** to the overcoat waist to increase it.

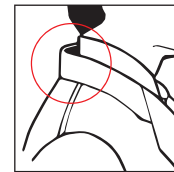
**5 SLEEVE LENGTH:**



You can add up to **1.5 cm (5/8 in)** to the sleeve to lengthen it. You can take up to **1.5 cm (5/8 in)** out of the sleeve to shorten it starting from the wrist.

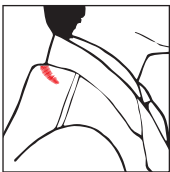
For more drastic reductions please contact our Customer Care.

**6 COLLAR:**



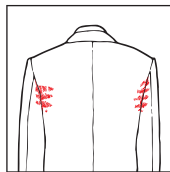
You can take up to **2 cm (3/4 in)** out of the collar semi-circumference of the overcoat to reduce it.

**7 COLLAR CREASE:**



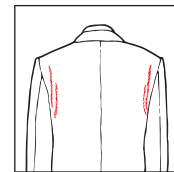
You can take **1 cm (3/8 in)** or **2 cm (3/4 in)** out of the collar crease to reduce it.

**8 CANNELLI:**



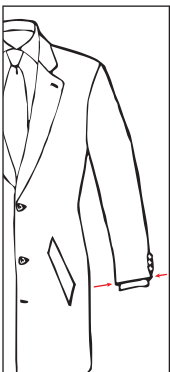
Excess fabric in the lower part of the shoulders area ("Cannelli") is conceived to allow better mobility.

You can take up to **1.5 cm (5/8 in)** out of each side to reduce the "cannelli".



You can add **1 cm (3/8 in)** to each side to increase them.

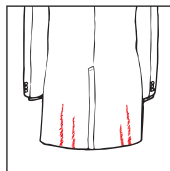
**9 SLEEVE WIDTH:**



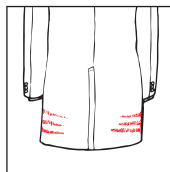
You can take up to **2 cm (3/4 in)** out of the sleeve width to reduce it.

You can add **1 cm (3/8 in)** to the sleeve width to increase it.

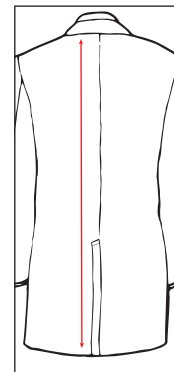
**10 OVERCOAT HIPS:**



You can take up to **6 cm (2 3/8 in)** out of the overcoat hips diameter to reduce it - **2 cm (3/4 in)** out of each hip and **2 cm (3/4 in)** out of the back centre seam.



**11 OVERCOAT LENGTH:**



You can take up to **3 cm (1 1/8 in)** out of the overcoat to shorten it.

The overcoat can't be lengthened.